



HBS-0250-2 SINGLE TOWER DESICCANT AIR DRYER GENERAL ARRANGEMENT

TOLERANCES UNLESS OTHERWISE SPECIFIED:

- FRACTIONS = ± 1/4 "
- ANGLES = ± 3°
- INCHES = ± 1/2 "
- FINISH = 250

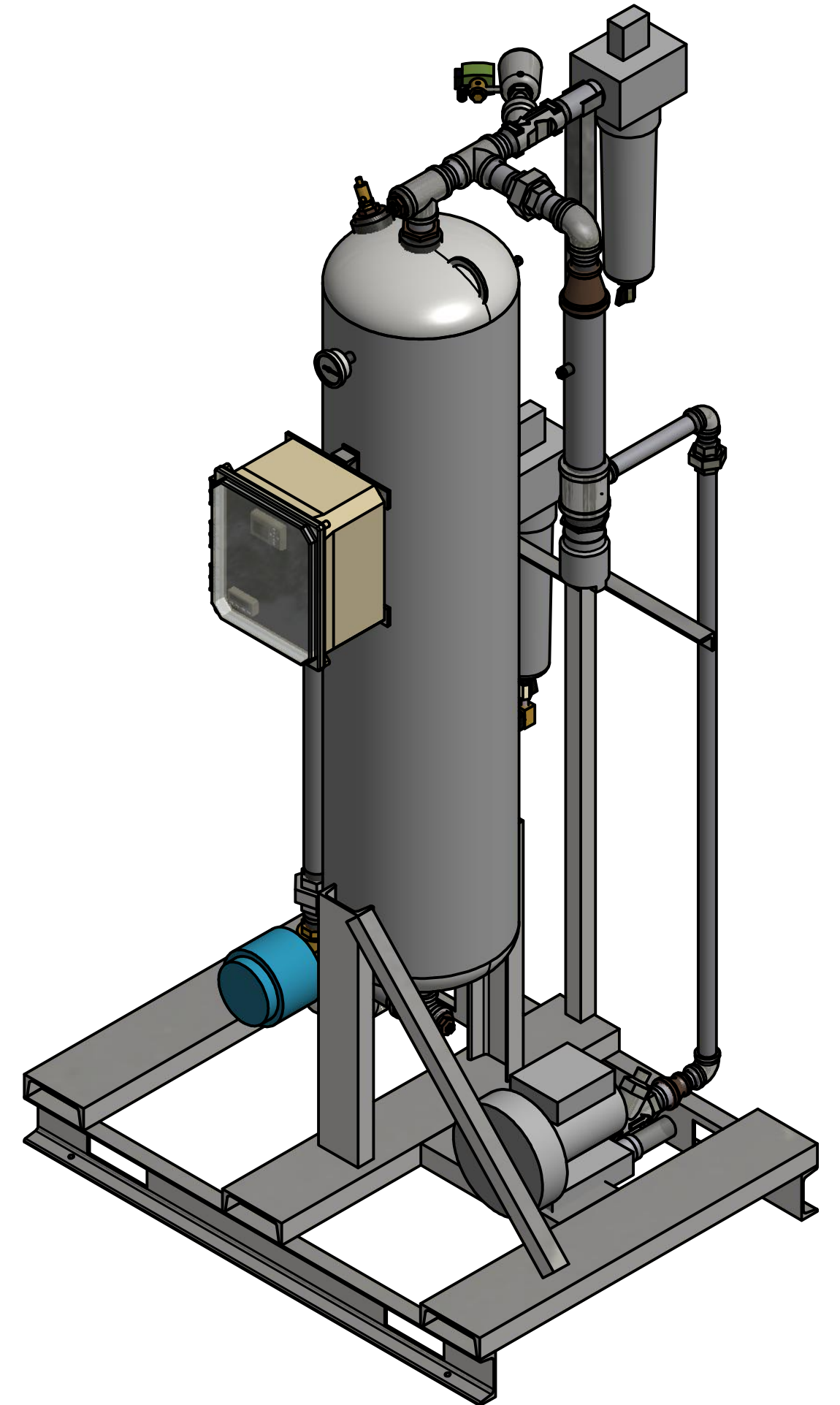
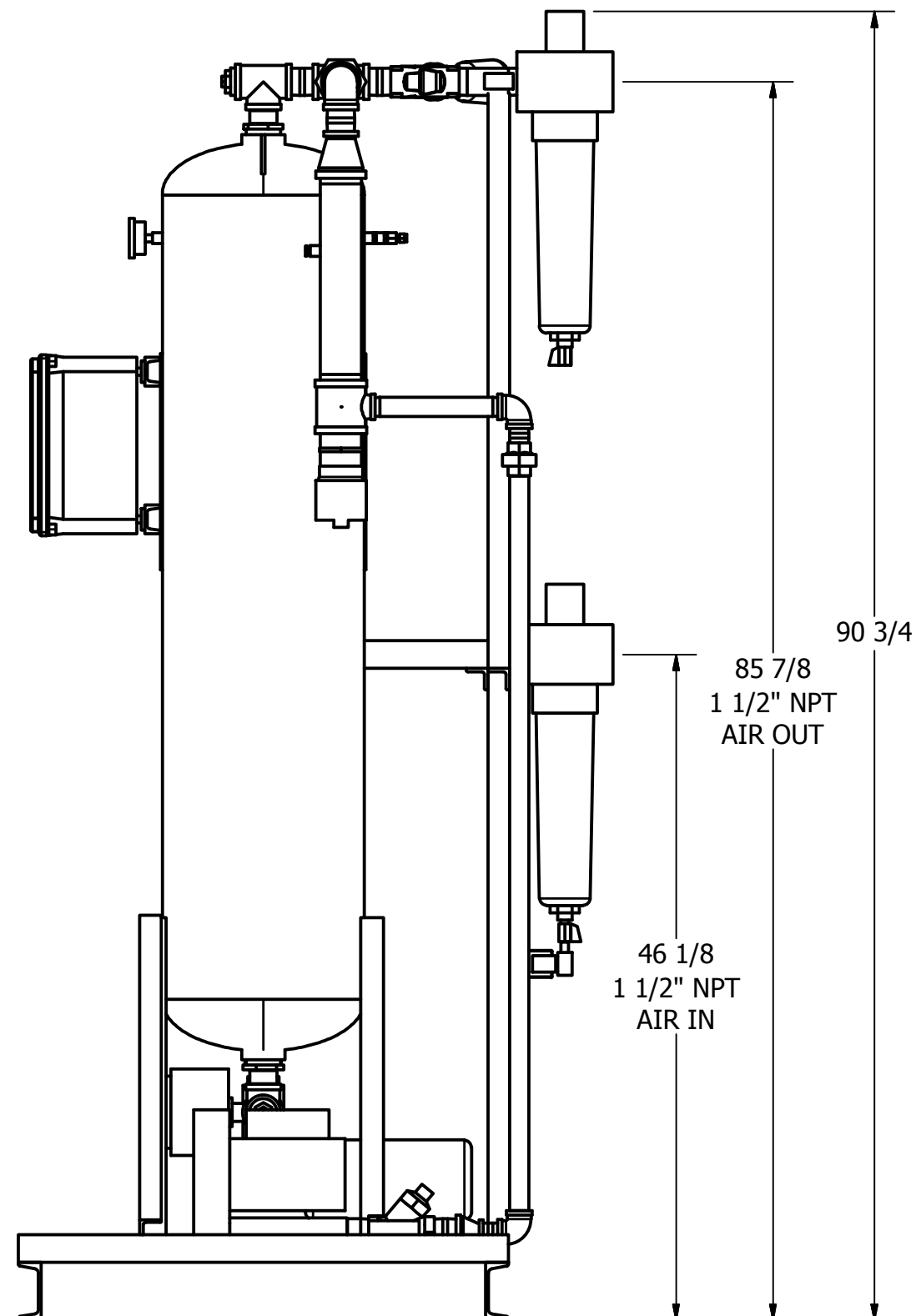
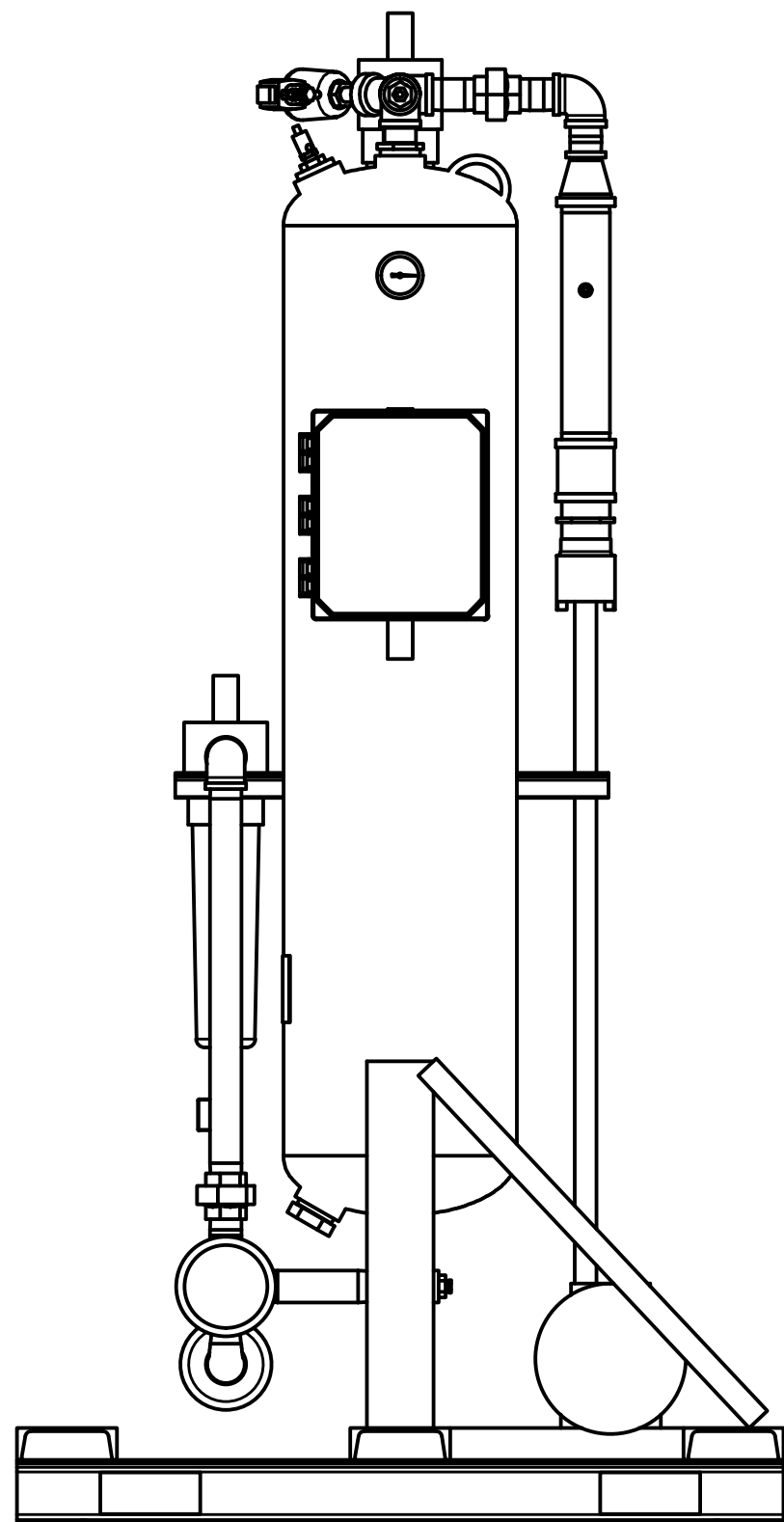
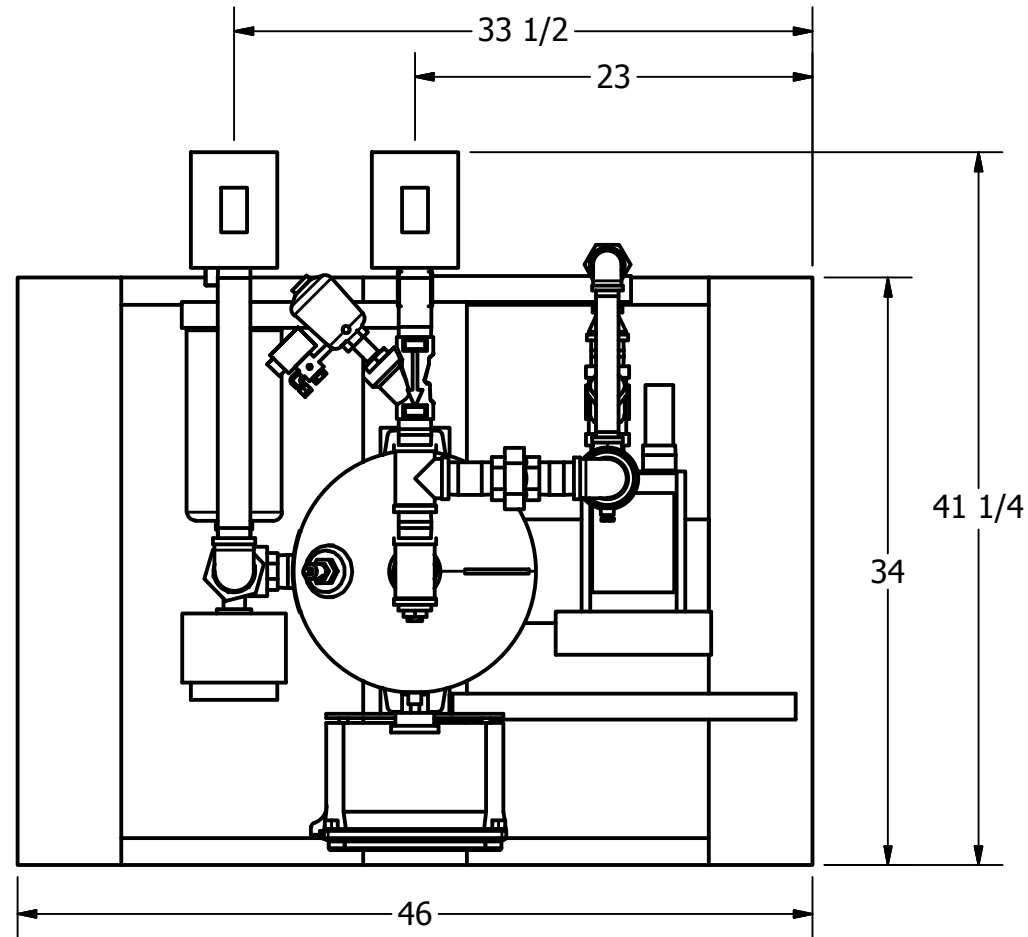
THE SPECIFICATIONS AND DRAWINGS DISCLOSED HEREIN ARE THE SOLE PROPERTY OF ALTEC AIR, AND SHALL NOT BE COPIED OR USED AS THE BASIS FOR SALE OR MANUFACTURE WITHOUT EXPRESS WRITTEN PERMISSION.

REVISION LOG

REV.	ECO.	DESCRIPTION	DATE	APPROVED
B	1220	PRODUCTION UPDATES	1/19/2022	WS

DRAWING NO. **AT20-980** REV. **B**

DRAWN: WS DATE: 1/15/2018
 CHECKED: DATE: SCALE: N/A SHEET: 1 OF 2



PRELIMINARY



HBS-0250-2 SINGLE TOWER DESICCANT AIR DRYER GENERAL ARRANGEMENT

TOLERANCES UNLESS
OTHERWISE SPECIFIED:

- FRACTIONS = ± 1/4 "
- ANGLES = ± 3°
- INCHES = ± 1/2 "
- FINISH = 250

THE SPECIFICATIONS AND DRAWINGS DISCLOSED HEREIN ARE THE SOLE PROPERTY OF ALTEC AIR, AND SHALL NOT BE COPIED OR USED AS THE BASIS FOR SALE OR MANUFACTURE WITHOUT EXPRESS WRITTEN PERMISSION.

REVISION LOG

REV.	ECO.	DESCRIPTION	DATE	APPROVED
B	1220	PRODUCTION UPDATES	1/19/2022	WS

DRAWING NO.

AT20-980

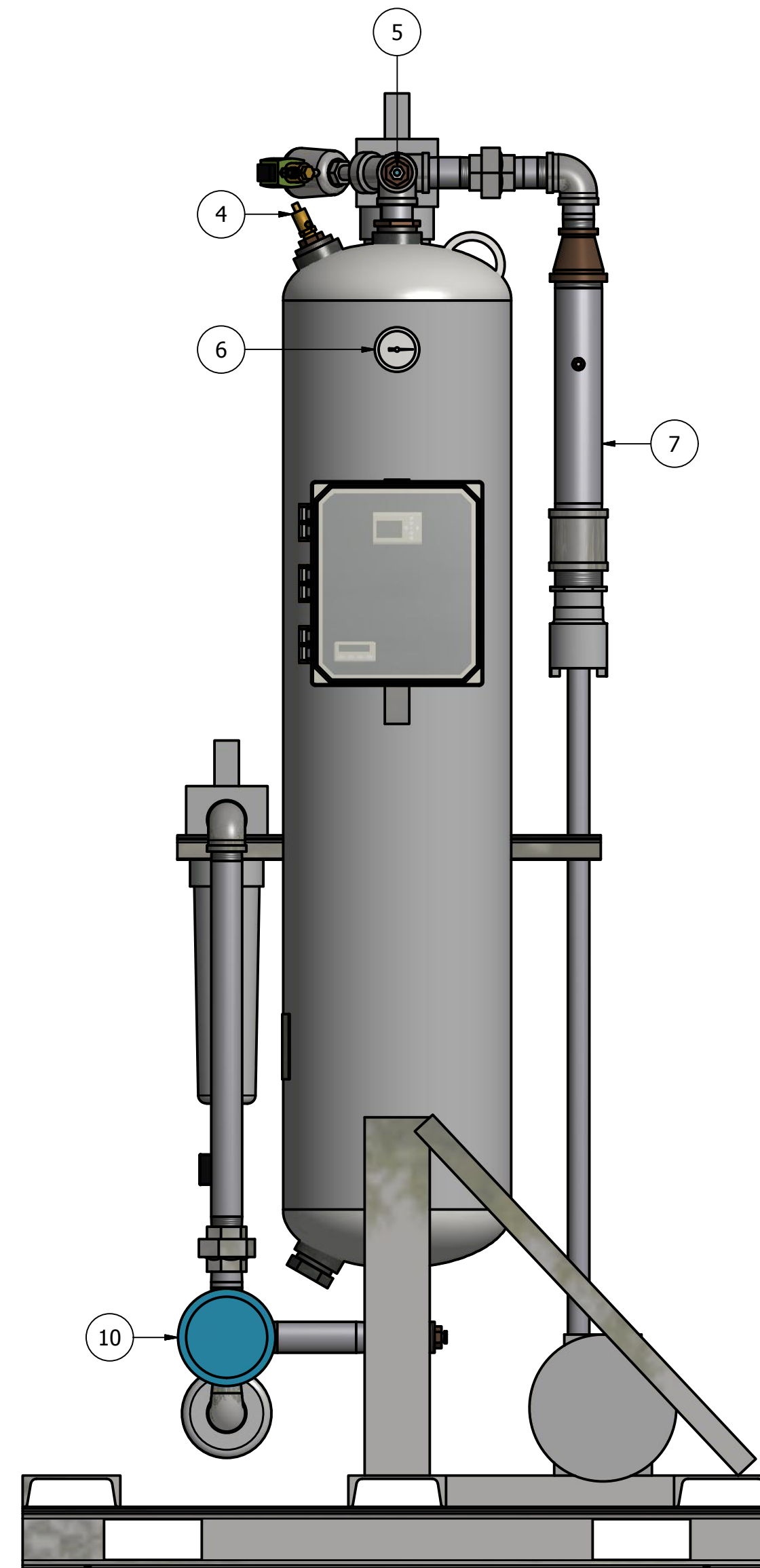
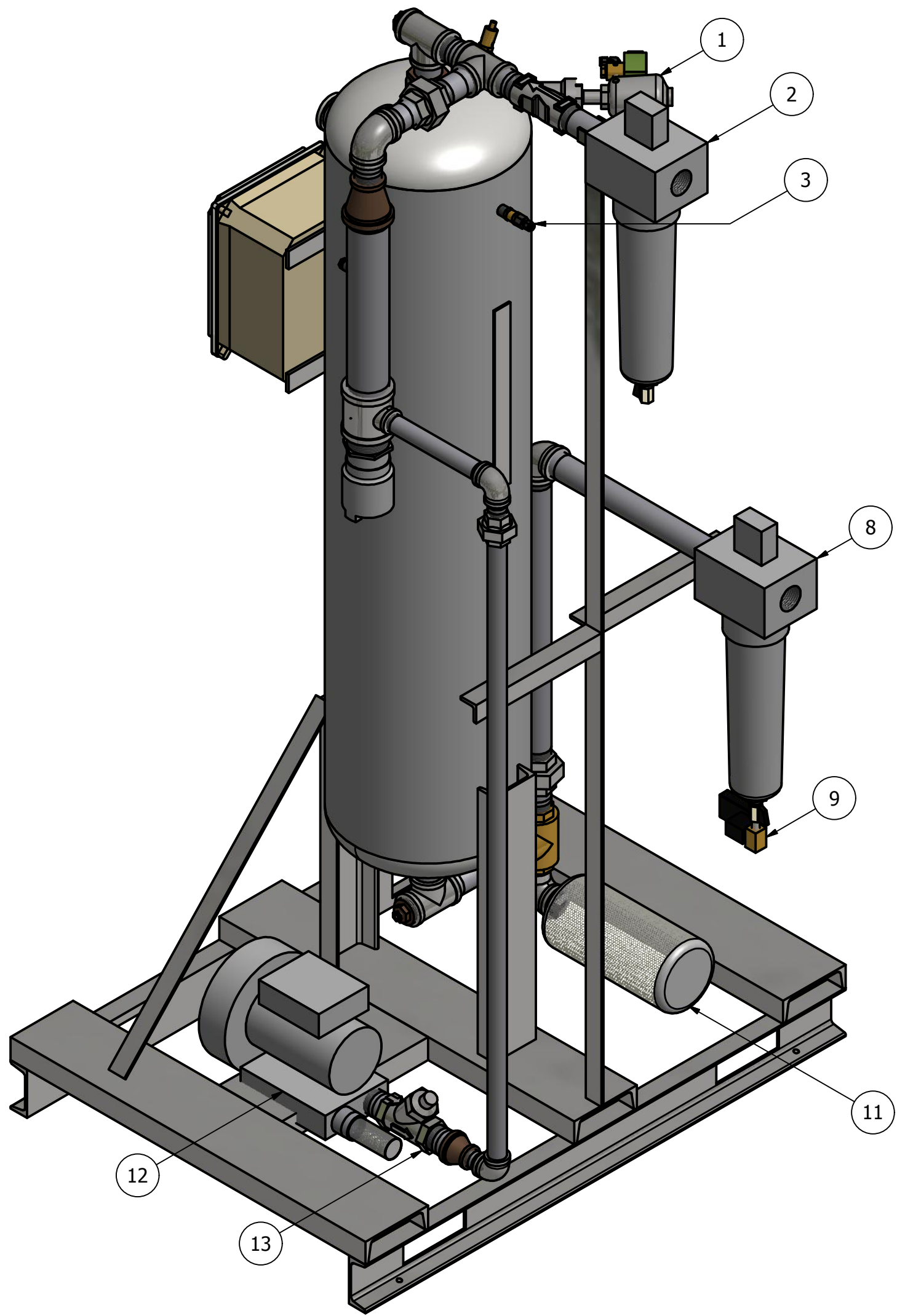
REV.
B

DRAWN: WS DATE: 1/15/2018
CHECKED: DATE:

SCALE: N/A SHEET: 2 OF 2

PARTS LIST

ITEM	QTY	DESCRIPTION
1	1	ANGLE BODY VALVE, OUTLET
2	1	PARTICULATE AFTER-FILTER
3	1	FILTER, CONTROL
4	1	RELIEF VALVE, TANK
5	1	MOISTURE INDICATOR
6	1	PRESSURE GAUGE, TANK
7	1	3 KW HEATER
8	1	COALESCER PRE-FILTER
9	1	TIMED DRAIN
10	1	3-WAY BALL VALVE, INLET/EXHAUST
11	1	MUFFLER, EXHAUST
12	1	3/4 HP BLOWER
13	1	CHECK VALVE, BLOWER
14	175 LBS	DESICCANT



PRELIMINARY